



GREATER MEKONG
SUBREGION
CORE ENVIRONMENT
PROGRAM

The **Core Environment Program (CEP)** supports the Greater Mekong Subregion (GMS) in delivering environmentally friendly economic growth. Anchored on the Asian Development Bank's (ADB) GMS Economic Cooperation Program, CEP promotes regional cooperation to improve development planning, safeguards, biodiversity conservation and resilience to climate change, all of which are underpinned by building capacity.

CEP is overseen by the environment ministries of the six GMS countries and implemented by the ADB-administered Environment Operations Center. Cofinancing is provided by the Governments of Finland and Sweden, and the Nordic Development Fund.

Find out more: www.gms-eoc.org

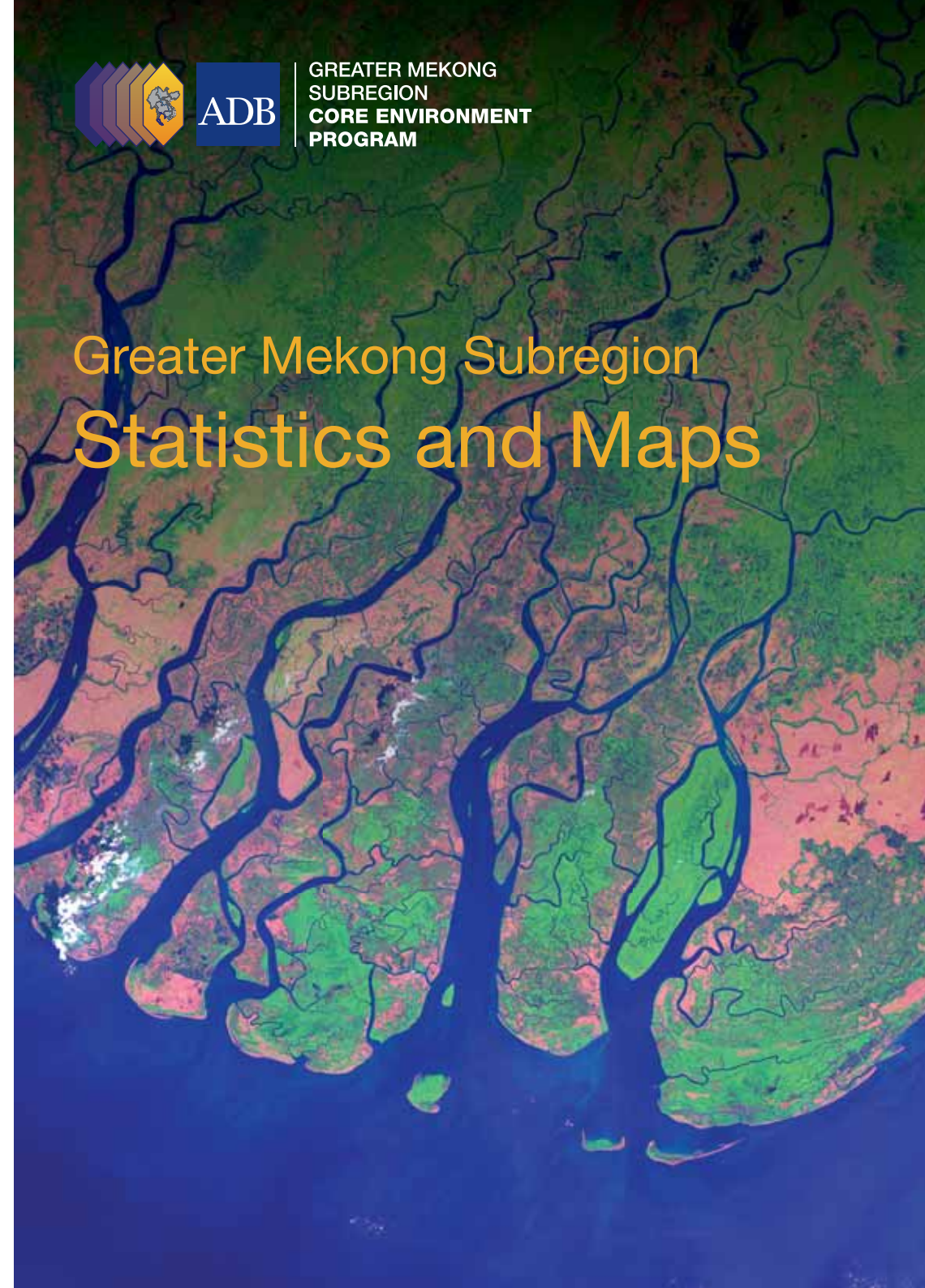
The views expressed in this publication are those of the authors and do not necessarily reflect the views and policies of the Asian Development Bank (ADB) or its Board of Governors or the governments they represent.



GREATER MEKONG
SUBREGION
CORE ENVIRONMENT
PROGRAM

GMS Environment Operations Center

Asian Development Bank, 23rd Floor, The Offices at Central World
999/9 Rama 1 Road, Pathumwan Bangkok 10330 Thailand
Tel: (+66) 2 207 4430 Fax: (+66) 2 207 4400
Email: info@gms-eoc.org



Statistics Portal

- ▶ Unique GMS regional and national data sets
- ▶ Over 35 indicators in six thematic areas
- ▶ Customize your own country fact sheets
- ▶ Download for presentations

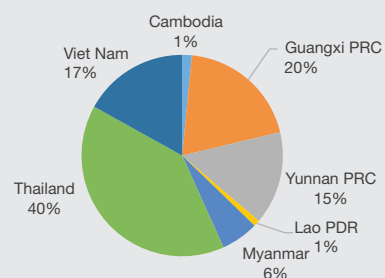
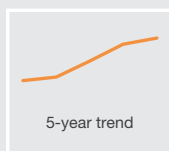
Map Portal

- Over 30 country and thematic maps
- All major sectors — agriculture, energy, environment, transport, tourism
- Interactive Atlas — choose from 30 layers
- GMS climate change scenario map
- GIS data — make your own maps

Gross domestic product in the GMS at current prices

Billion US\$ value of goods and services produced within a year at the reported price during the same year

2012
919
US\$ billion

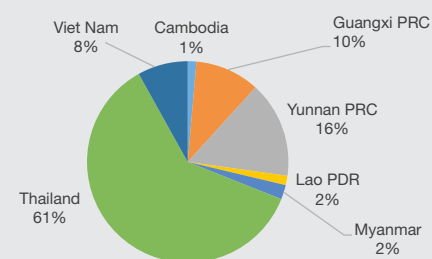


Notes: PRC = People's Republic of China; Lao PDR = Lao People's Democratic Republic.
Sources: IMF World Economic Outlook (2012); Guangxi, PRC and Yunnan, PRC statistical yearbooks (2011).

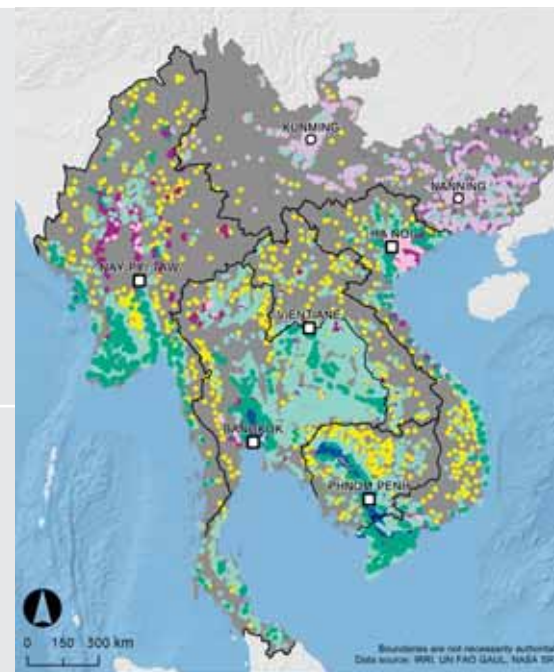
Registered motor vehicles in the GMS

Number of motorized vehicles registered in a year (excluding motorcycles)

2011
17,895,900
vehicles



Sources: ASEAN-Japan Transport Partnership; GMS country transport ministries.



Rice Production in the Greater Mekong Subregion

Rice production by type (1 point = 10,000 hectares):

- Irrigated first crop
- Irrigated second crop
- Irrigated dry season
- Irrigated wet season
- Intermediate rainfed (30-100cm)
- Shallow rainfed (0-30cm)
- Deepwater (>1m)
- Hybrid
- Dryland

GMS Interactive Atlas

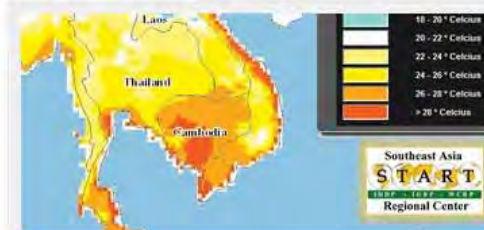


Browse and combine over 30 map layers on environmental and economic features of the Greater Mekong Subregion.

[Learn More](#)

[Launch Tool](#)

GMS Climate Change Map



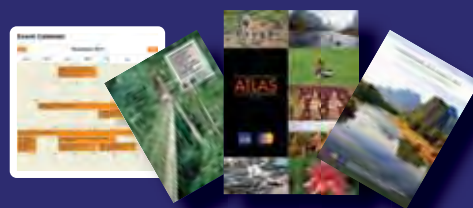
Browse and view the potential geographic outcomes of climate change scenarios in the Greater Mekong Subregion.

[Learn More](#)

[Launch Tool](#)

Library

- ▶ GMS event calendar
- ▶ Publications
- ▶ News



Coming soon ▶ Environment GMS E-news and biodiversity landscape indicators

Access today at www.gms-eoc.org