



GREATER MEKONG SUBREGION
CORE ENVIRONMENT
PROGRAM



GMS Program Regional Investment Framework

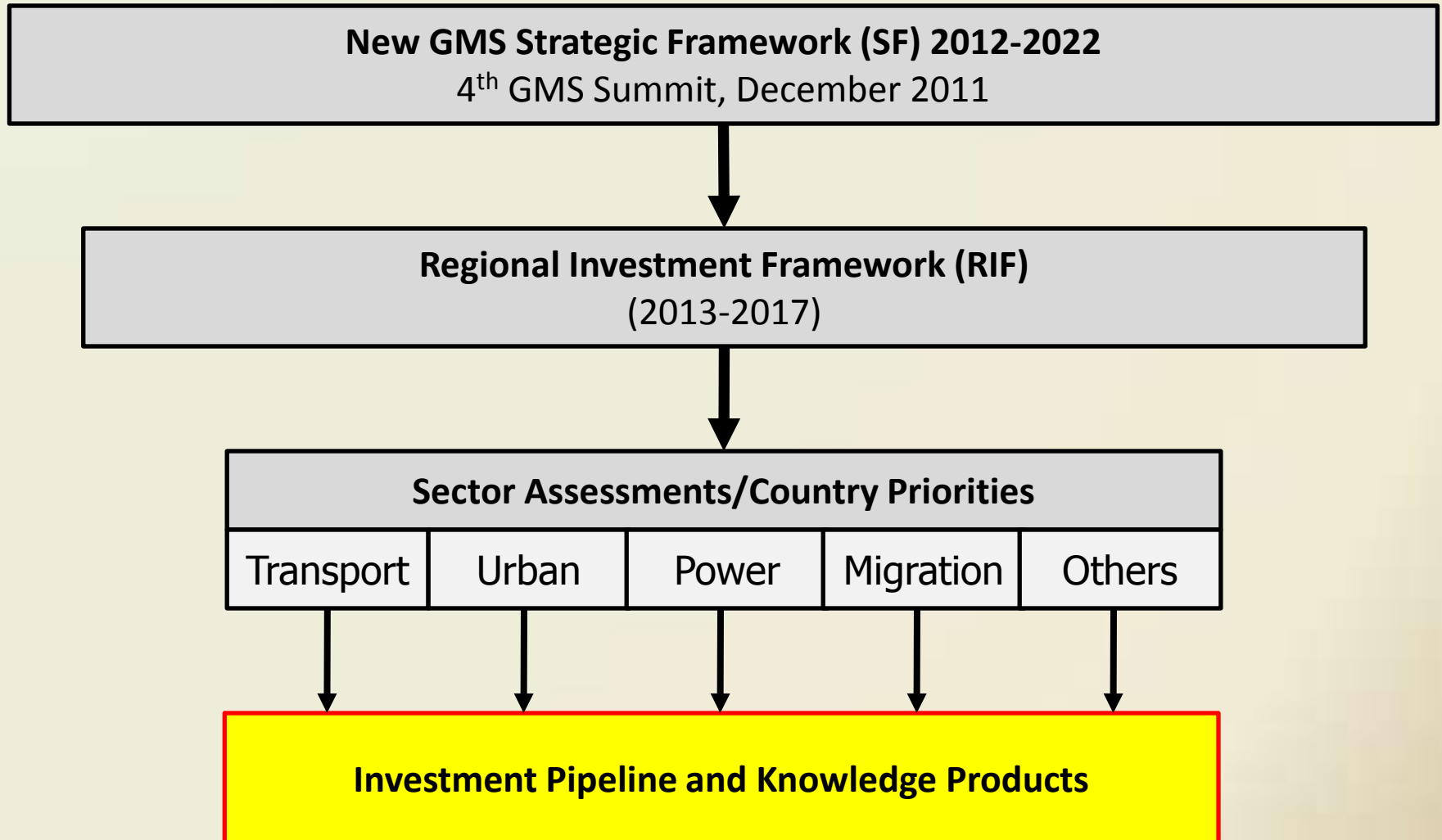


- 1) What is the Regional Investment Framework?**
- 2) RIF Outputs to date**
- 3) CEP-BCI analytical support**
- 4) Next steps**

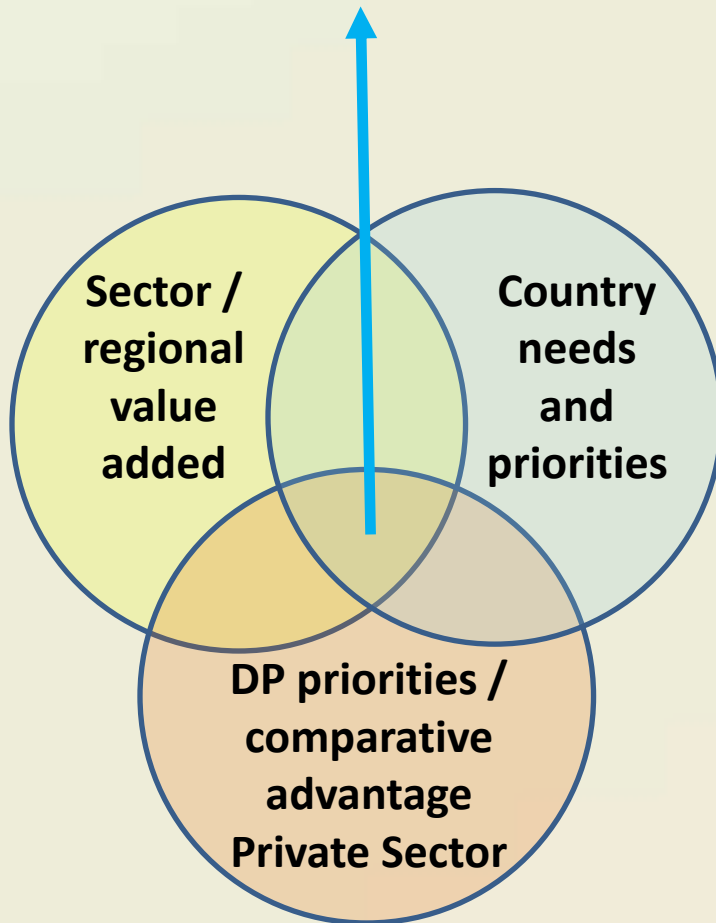
The Regional Investment Framework: Operationalizing the new GMS SF



GREATER MEKONG SUBREGION
CORE ENVIRONMENT
PROGRAM



RIF PROGRAM



- Practical, implementable, and results-focused
- Include but not be limited to ADB-supported operations
- Ensure investments for corridor development are demand driven
- Balance external and domestic connectivity and trade,
- Carefully assess regional dimensions of national projects
- Adopt multi-sector approach
- Recognize emerging priority areas
- Use spatial prioritization based on sound criteria



- 1) What is the Regional Investment Framework?**
- 2) RIF Outputs to date**
- 3) CEP-BCI analytical support**
- 4) Next steps**

Sector assessments and country priorities:

- Transport, Logistics and Trade, part I; part II ongoing
- Power and energy
- Urban development
- HRD Strategic Framework and Action Plan 2013-2017
- Labor Migration
- Existing sector strategies (Ag., Env., Tourism)
- Assessment of national plans re GMS priorities

Investments:

- At least \$9b investment projects identified (\$6.5 by RIF)
- At least \$88m of TA projects
- projects incomplete, not prioritized, financing yet to be considered

Indicative Pipeline for the Regional Investment Framework in Natural Resources Sector



GREATER MEKONG SUBREGION
CORE ENVIRONMENT
PROGRAM

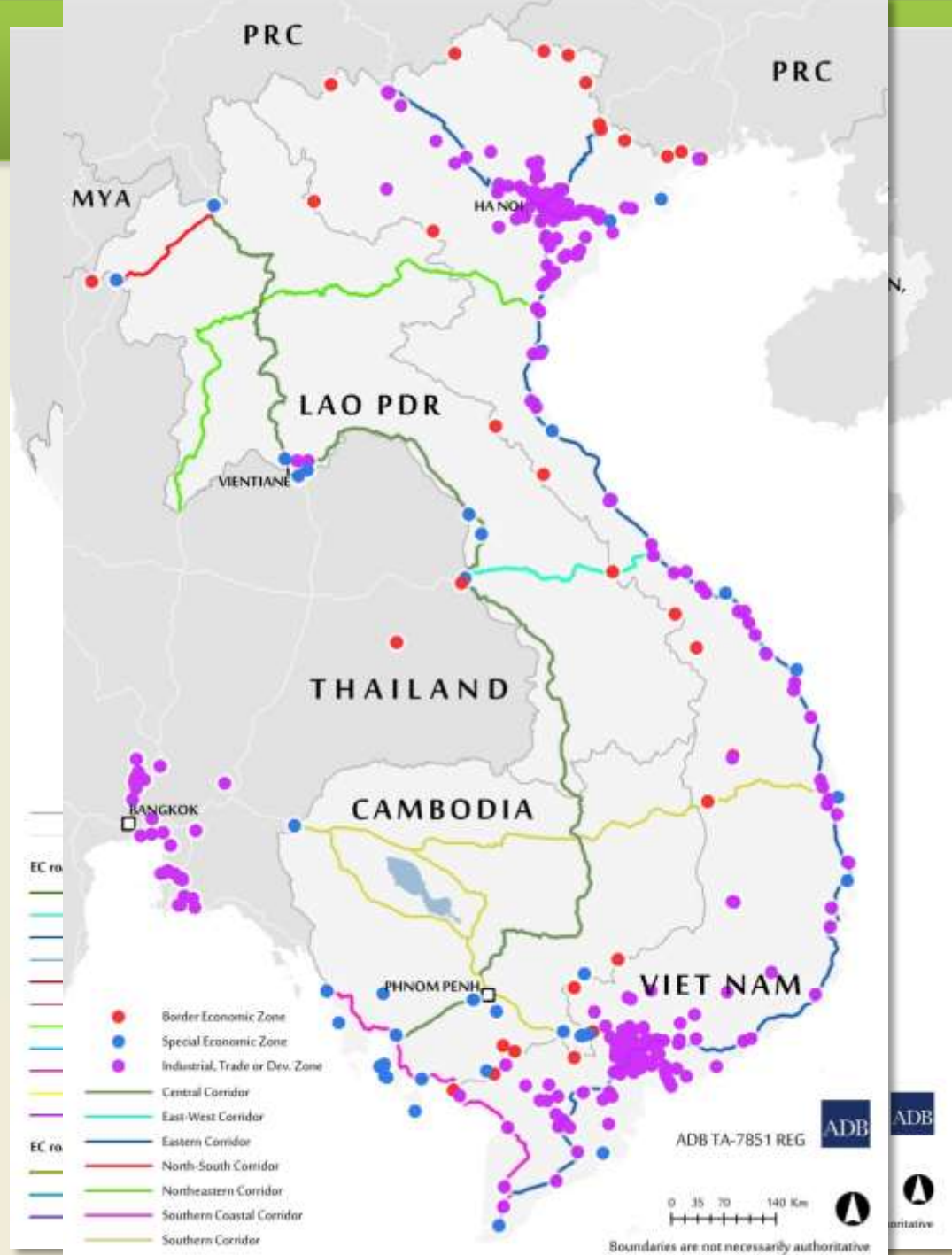
No	Project Title/ County coverage	Indicative Timeline	Cost Estimate (\$million)
1.	Global Environment Facility (GEF) Regional Biodiversity and Forestry Program (including star allocations, SFM, adaptation and focal area set aside) Participating Countries: All GMS Countries	2012-2016	20.0
2.	Transboundary biodiversity landscape management and biodiversity conservation corridors in Mekong Headwaters, Sino-Vietnamese Limestone and Tenasserim Mountains Participating Countries: Yunnan and Guangxi PRC, Viet Nam, Thailand	2015-2017	60.0 (20.0 each per landscape)
3.	Forest carbon sequestration in the GMS East West Economic Corridor (EWEC) Participating Countries: Lao PDR, Myanmar, Thailand	2014-2017	100.0
4.	Sustainable Forest Management (REDD+ readiness) Participating Countries: Myanmar, Thailand	2014-2017	60.0
5.	Green supply chain development for forest products Participating countries: Cambodia, Lao PDR and Viet Nam	2016-2017	70.0
6.	Enhancing community resilience to climate change through ecosystem based approaches in biodiversity landscapes Participating countries: Cambodia, Lao PDR and Viet Nam	2014-2017	60.0
7.	Low carbon freight corridors Participating Countries: Lao PDR and Viet Nam	2015-2017	60.0



- 1) What is the Regional Investment Framework?**
- 2) RIF Outputs to date**
- 3) CEP-BCI analytical support**
- 4) Next steps**

EOC analytical support: Baseline Mapping

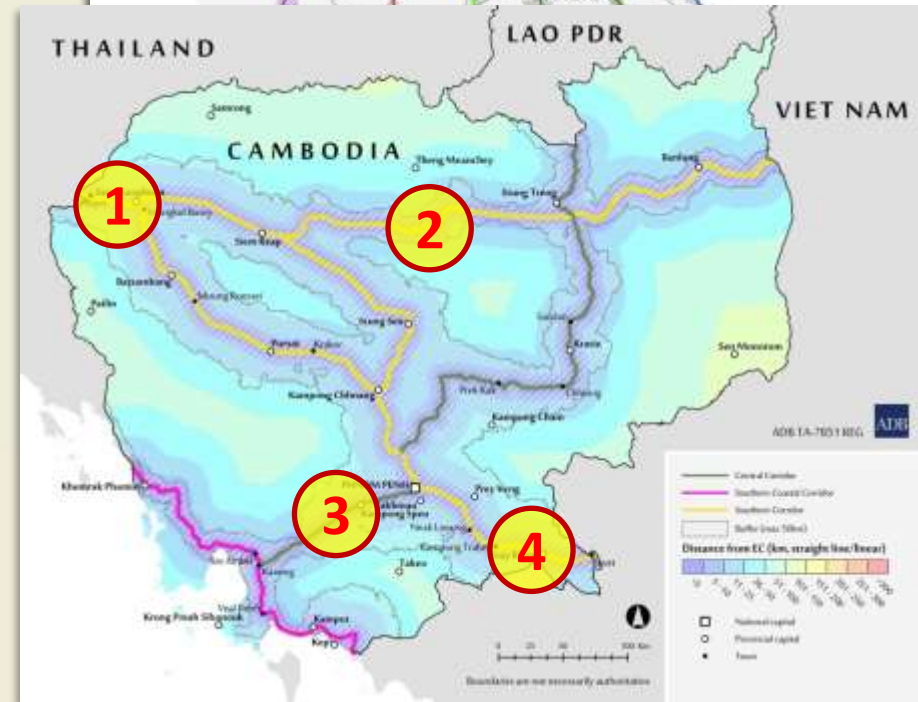
- Corridor roads,
- Railways,
- Hydropower,
- Tourism,
- ENR,
- Corridor towns,
- SEZ's
- Prop. Investments



EOC analytical support: Spatial Prioritization

Not all EC roads (or sections) can or should become full-fledged Economic Corridors:

1. Accessibility?
2. Proximity to SEZs?
3. Other assets / investments (bundling)?
4. Environmental services / vulnerability?
5. Volume of trade and traffic?
6. Future growth potential?



1. **Poipet – Battambang:** Agro-processing and rice exports
2. **Siem Reap – Stung Treng:** Mining and tourism (potential)
3. **Phnom Penh – Sihanoukville:** Port to Port (export / imports)
4. **Prey Veng – Bavet:** Agro-processing and rice exports



- 1) What is the Regional Investment Framework?**
- 2) RIF Outputs to date**
- 3) CEP-BCI analytical support**
- 4) Next steps**



- Further analysis + country inputs on national projects with regional implications (March / April 2013)
- Prioritization and circulation of initial draft of RIF investment program to member countries for review (June / July 2013)
- Draft RIF Investment Program and resource mobilization (ECF-5, August 2013)
- GMS Investment Conclave (August 2013)
- RIF Endorsement (19th MC, December 2013)



**GREATER MEKONG SUBREGION
CORE ENVIRONMENT
PROGRAM**

Thank you!